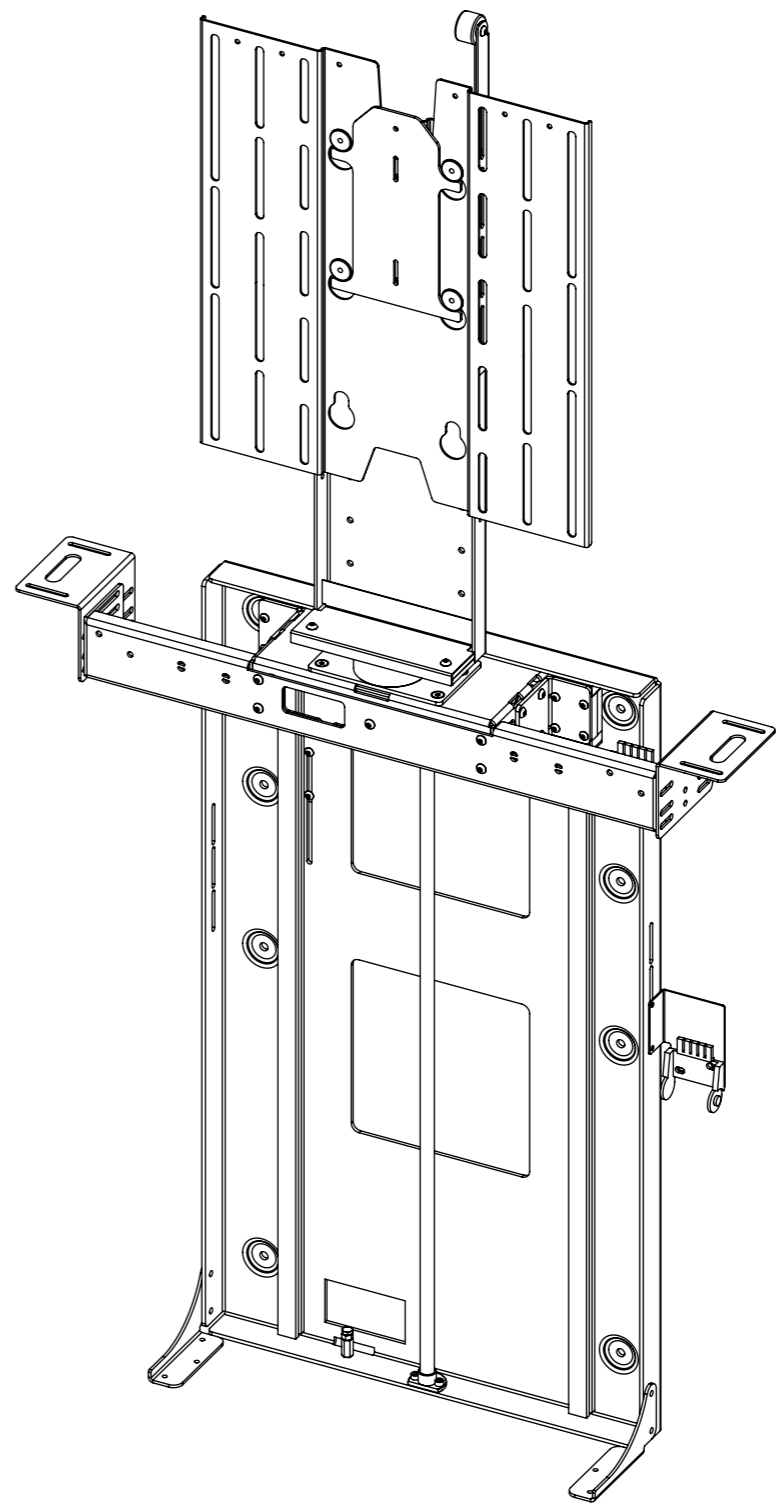
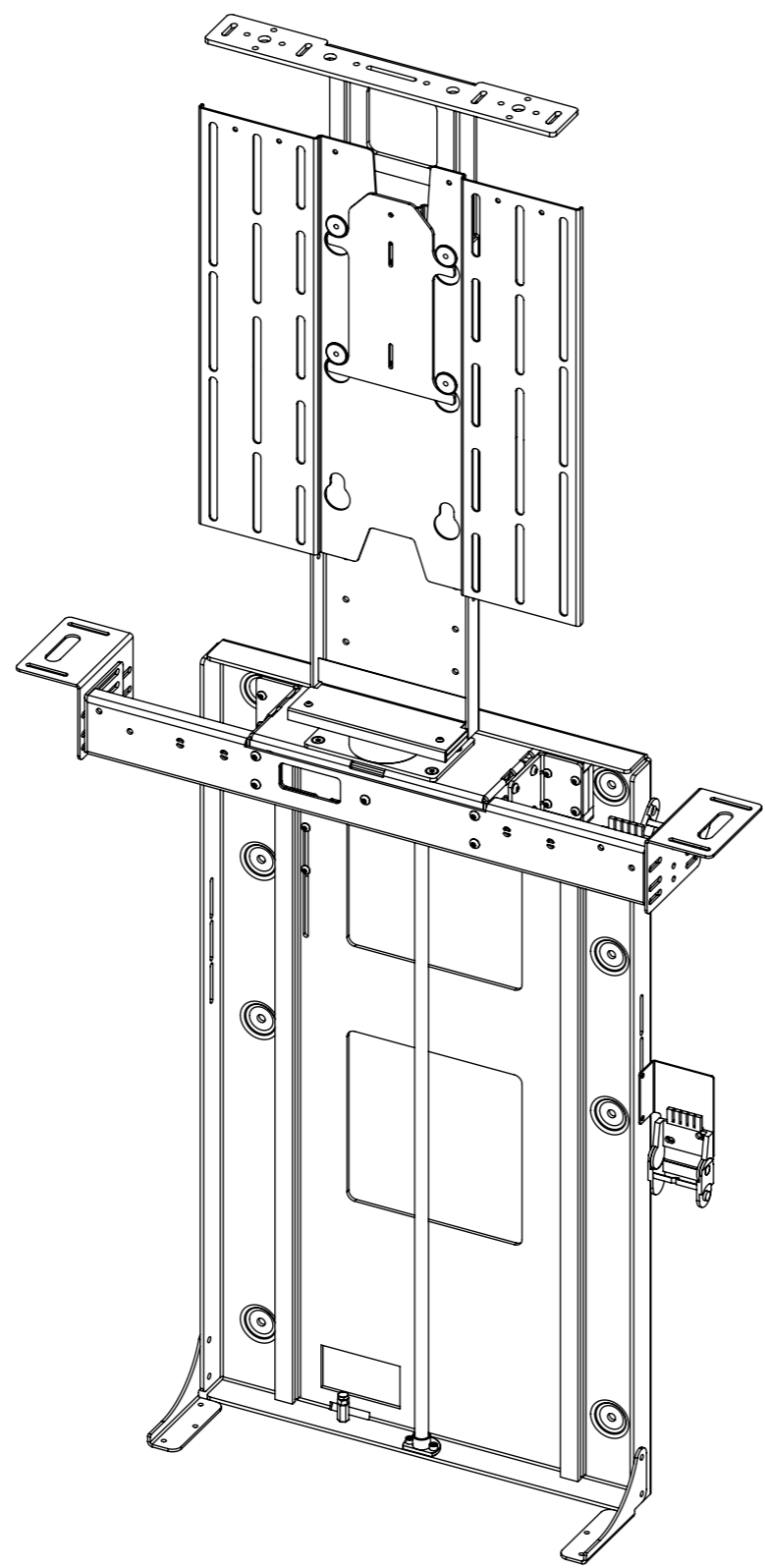


LSM-BE/PF 5

LIFT SYSTEM FOR BOX ENCLOSURE/PUSH FLAP



future automation



LSM-BE/PF 5

LIFT SYSTEM FOR BOX ENCLOSURE/PUSH FLAP



future automation

SPECIFICATION	MEASUREMENTS
Maximum Screen Height	730mm (28.7")
Screen Sizes (approx.)	50" - 55"
Maximum Lifting Capacity	50Kg (110lb)
Maximum Lifting Capacity (Marine)	30Kg (66lb)
Internal Cabinet Height	880mm (34.6")
Decibel Rating	52 dB
Packaging Dimensions	1080 x 850 x 330mm (42.5 x 33.5 x 13")
Shipping Weight	35Kg (77lb)
Movement Type	Motorised
Power Supply Required	110V - 240V AC
Power Consumption	250 - 500W
Power Consumption Standby	3W
Mounting Patterns Supported	VESA 400, 300, 200 W x 400, 300, 200 H
Control Options	IR Remote, RS232, Contact Closure, RF Available
Product Options / Features	Specific B&O and Loewe mounts / adapters, Custom RAL paint finishes
Package Contents	Mechanism, IR remote control, Push Flap Kit, Box Enclosure Kit
Marine Suitable	Yes

LSM-BE/PF 5

LIFT SYSTEM FOR BOX ENCLOSURE/PUSH FLAP



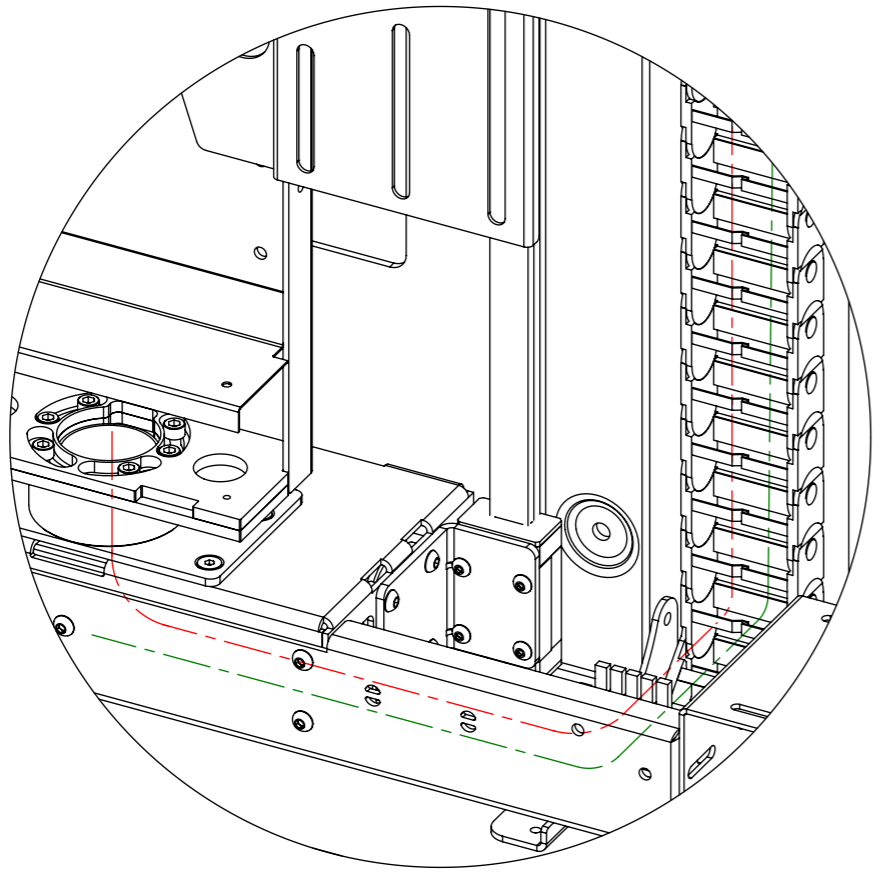
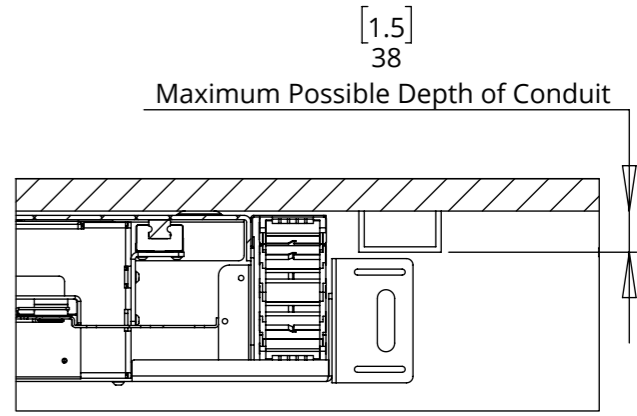
future automation

CABLE ROUTING

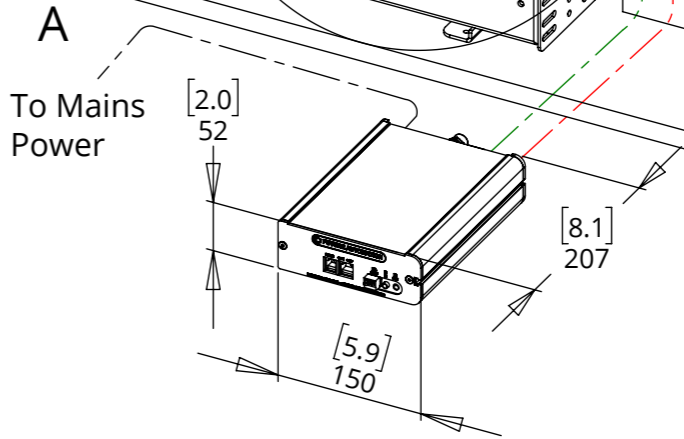
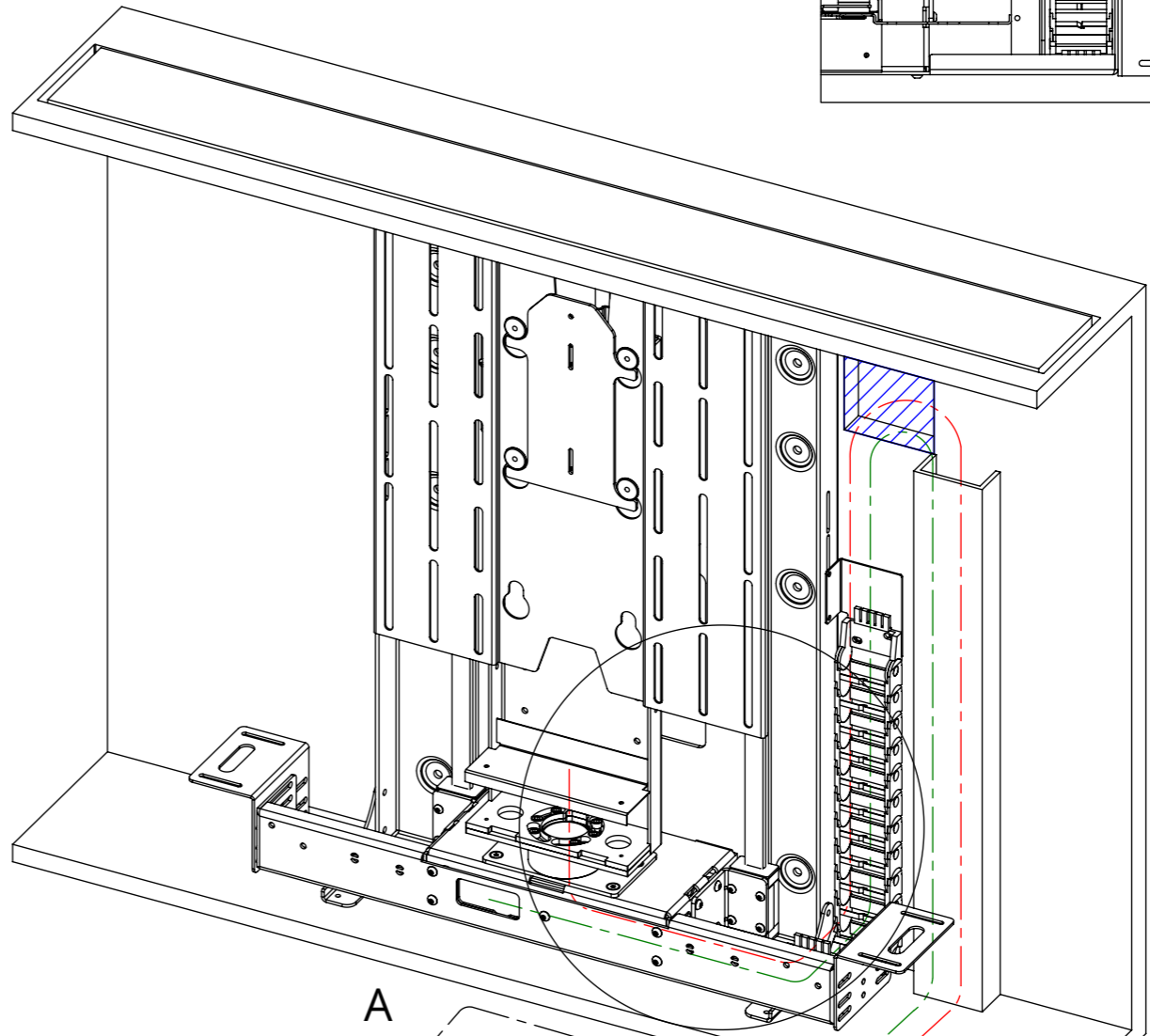
The LSM has an easily removable Mount Cover that cables from the screen can be routed underneath. Cables then travel through the centre of the Mount Boss and into the beam. Cables must be routed carefully to prevent any interference with the LSM beam as it operates.

Screen and Mechanism cables should be routed to a control box outside of the cabinet via an opening in the back of the cabinet or a conduit leading to the bottom.

- SCREEN CABLES
- MECHANISM CABLES
- POWER CABLE



DETAIL A



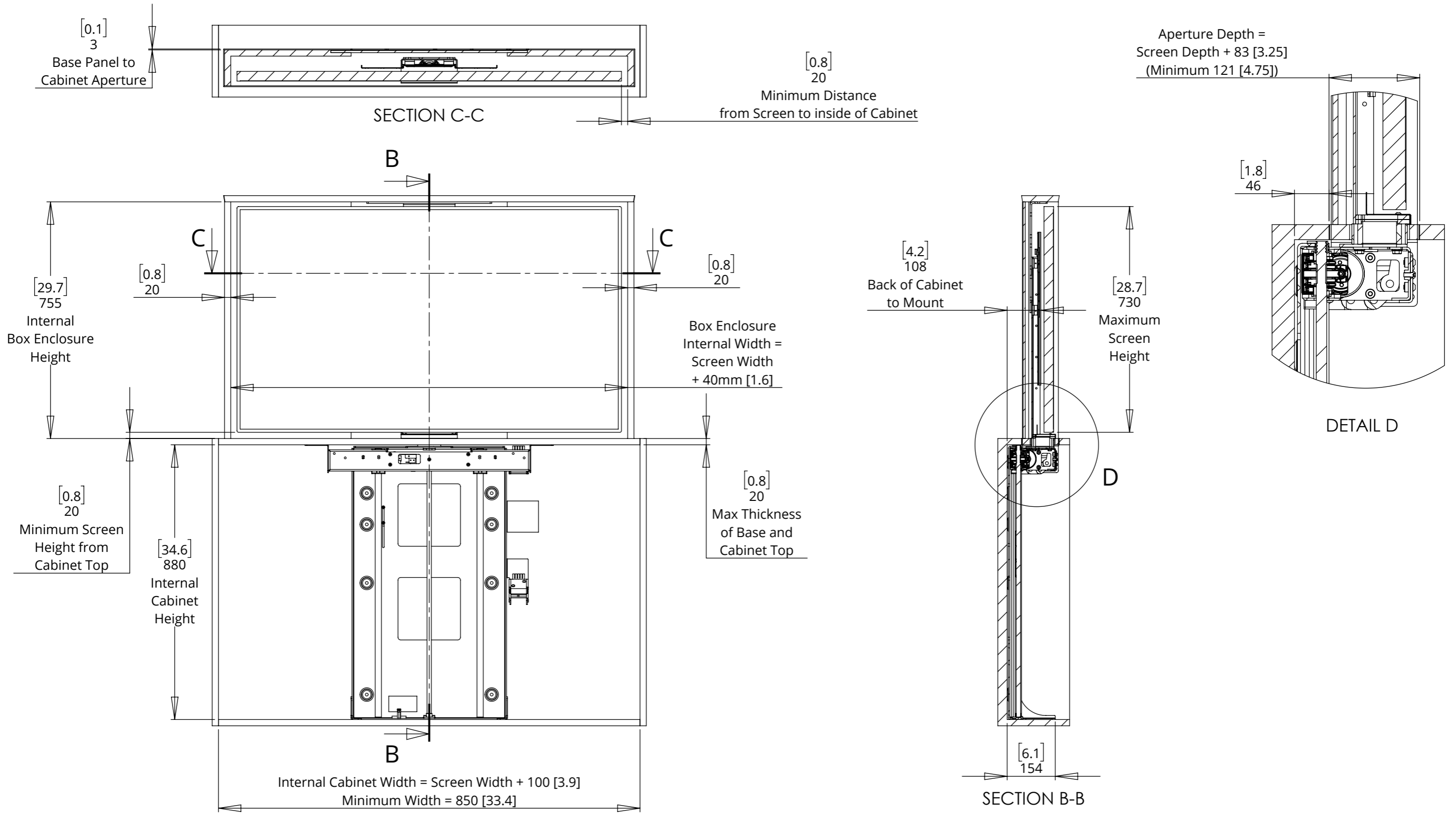
LSM-BE/PF 5

LIFT SYSTEM FOR BOX ENCLOSURE/PUSH FLAP



future automation

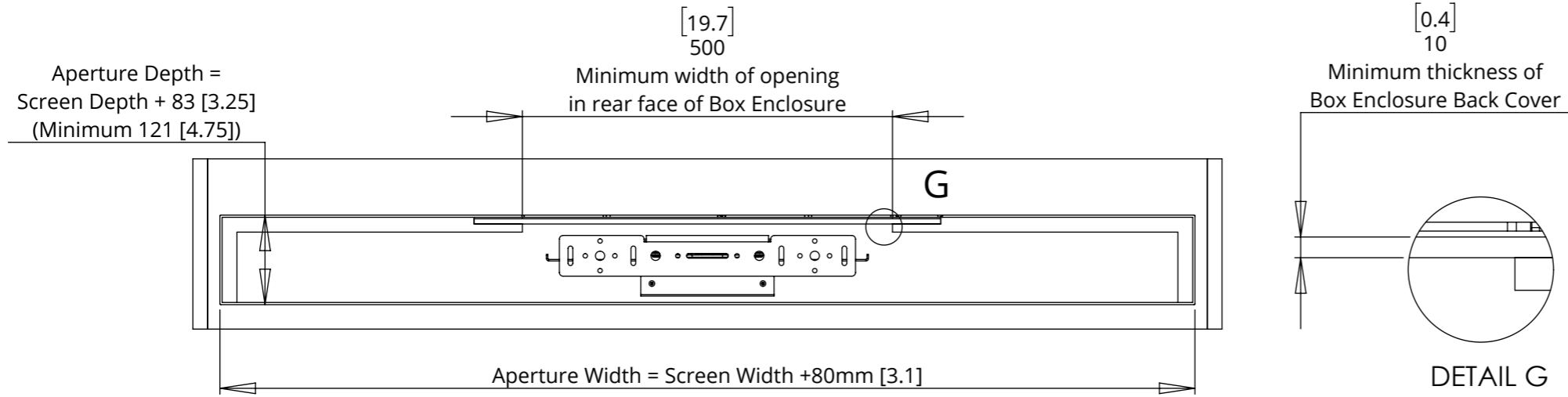
LSM-BE 5 - MECHANISM UP - IN CABINET



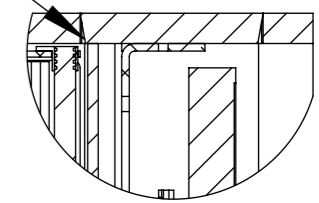
LSM-BE/PF 5

LIFT SYSTEM FOR BOX ENCLOSURE/PUSH FLAP

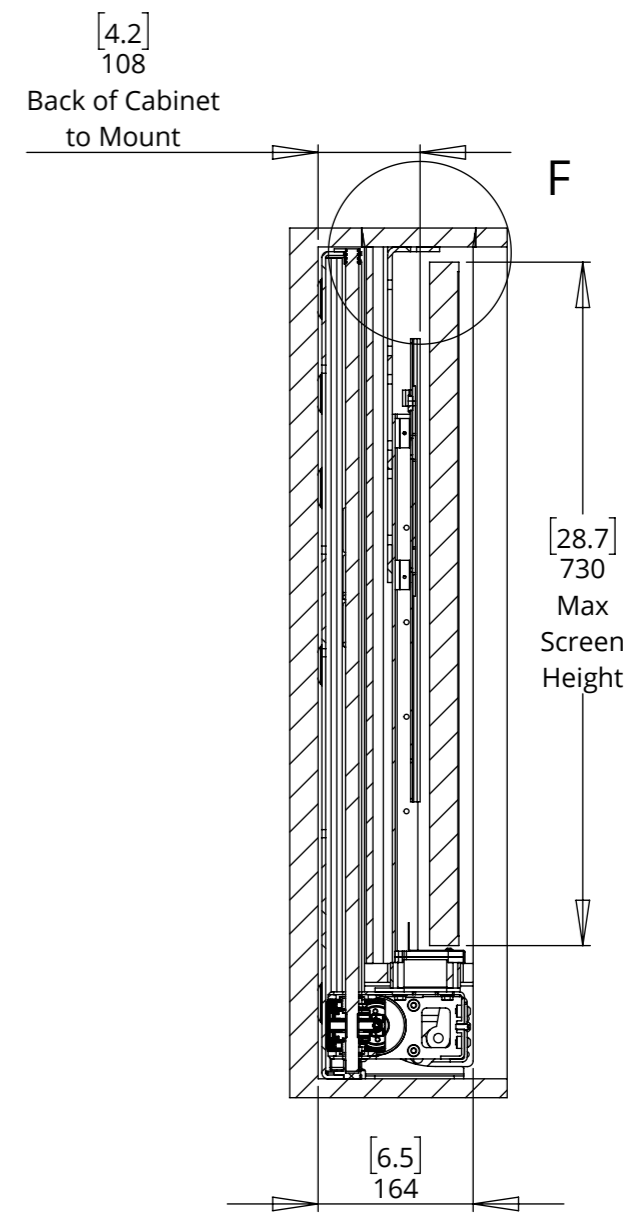
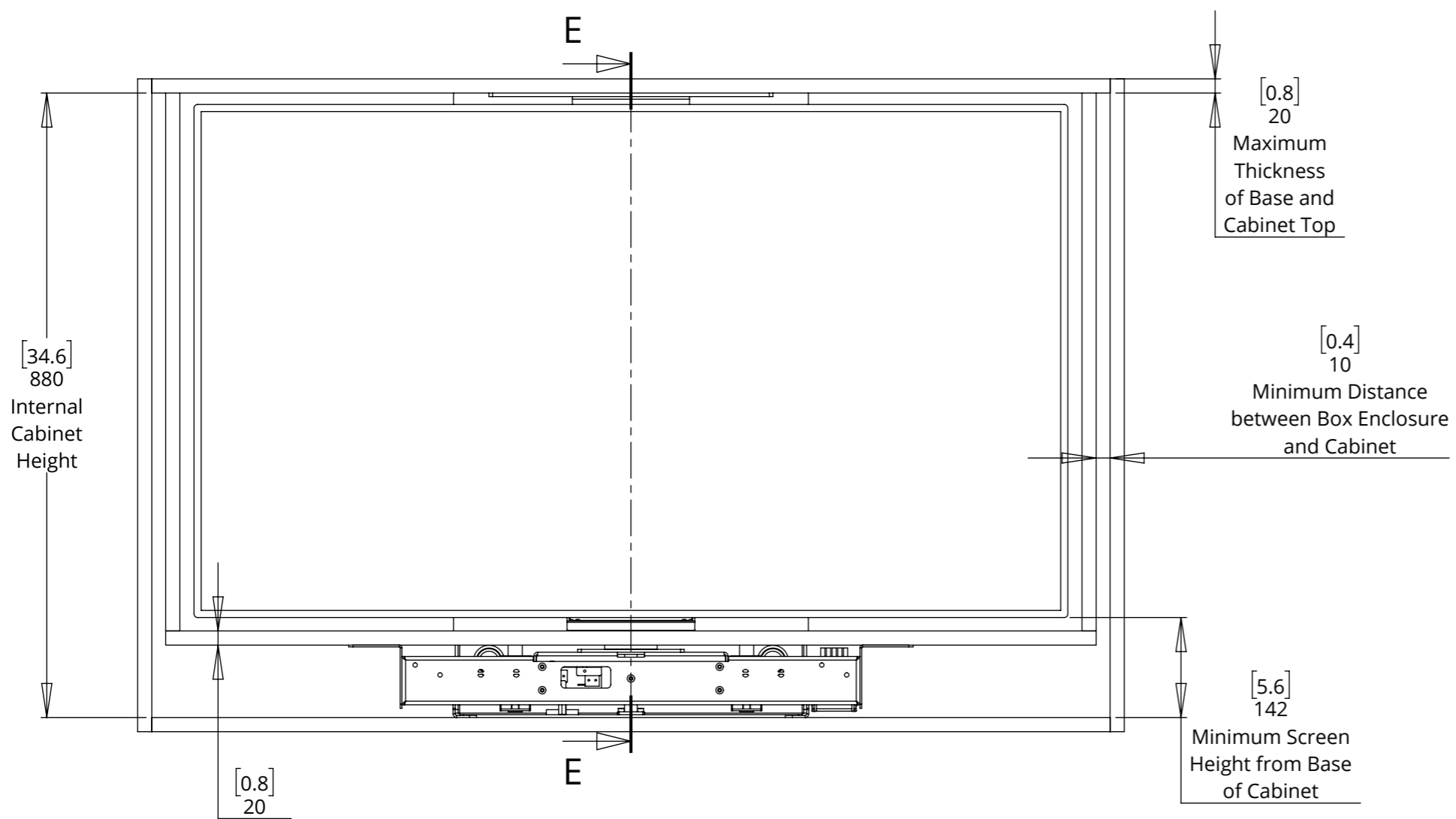
LSM-BE 5 - MECHANISM DOWN - IN CABINET



Shown with tapered Box Enclosure Lid in square Cabinet Aperture. A tapered Cabinet Aperture can be used to improve the fit.



DETAIL F



SECTION E-E

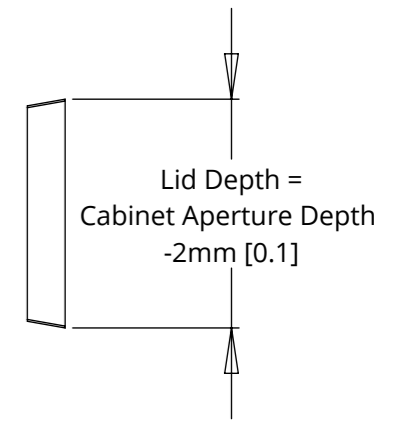
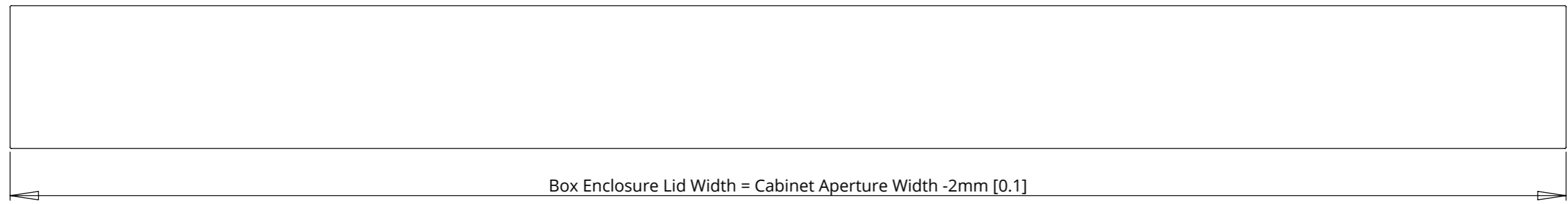
LSM-BE/PF 5

LIFT SYSTEM FOR BOX ENCLOSURE/PUSH FLAP

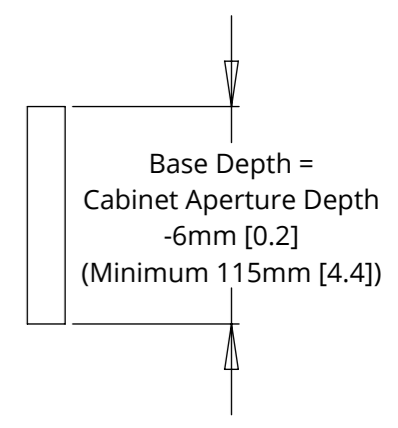
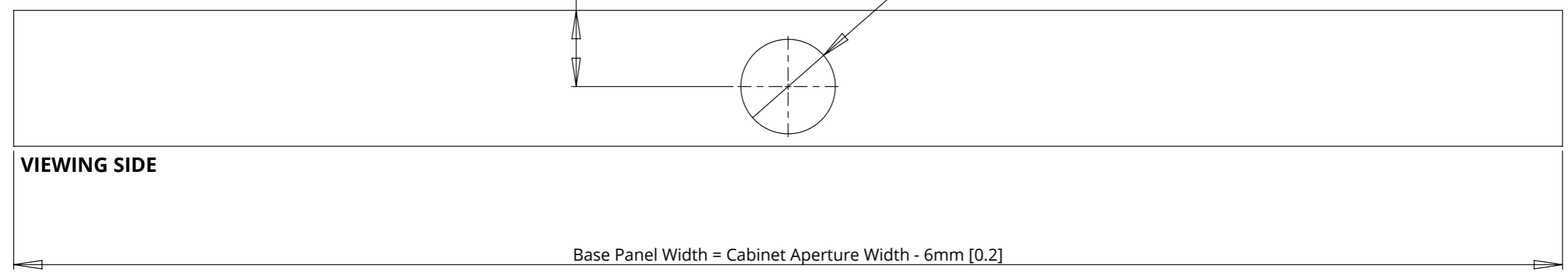
BOX ENCLOSURE BASE PANEL AND LID DETAILS

NOTE: A tapered Box Enclosure Lid creates a good fit in the Cabinet Aperture and helps the Box Enclosure to locate within the cabinet.

LID (TAPERED) - TOP VIEW



BASE PANEL - TOP VIEW



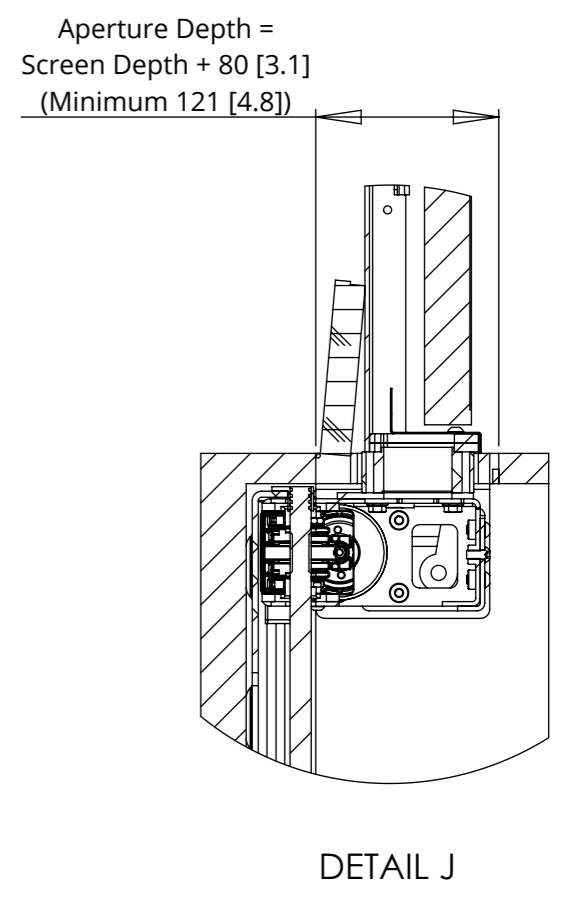
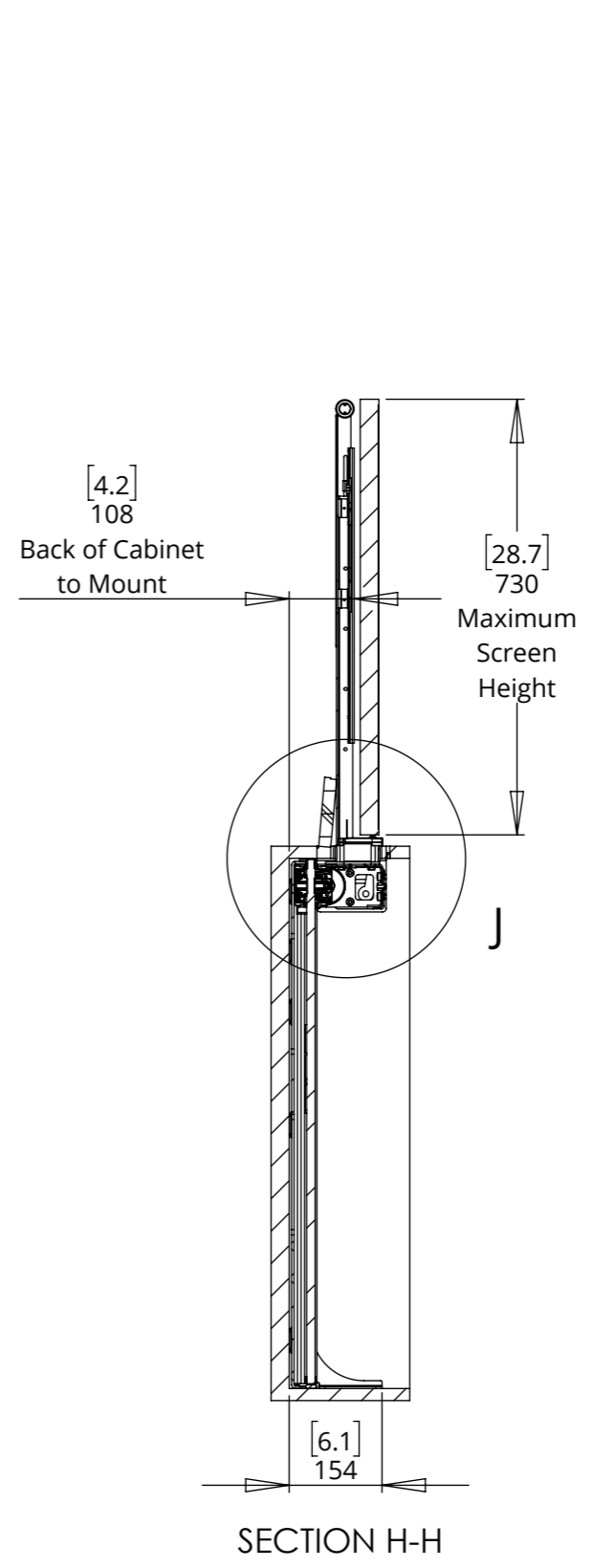
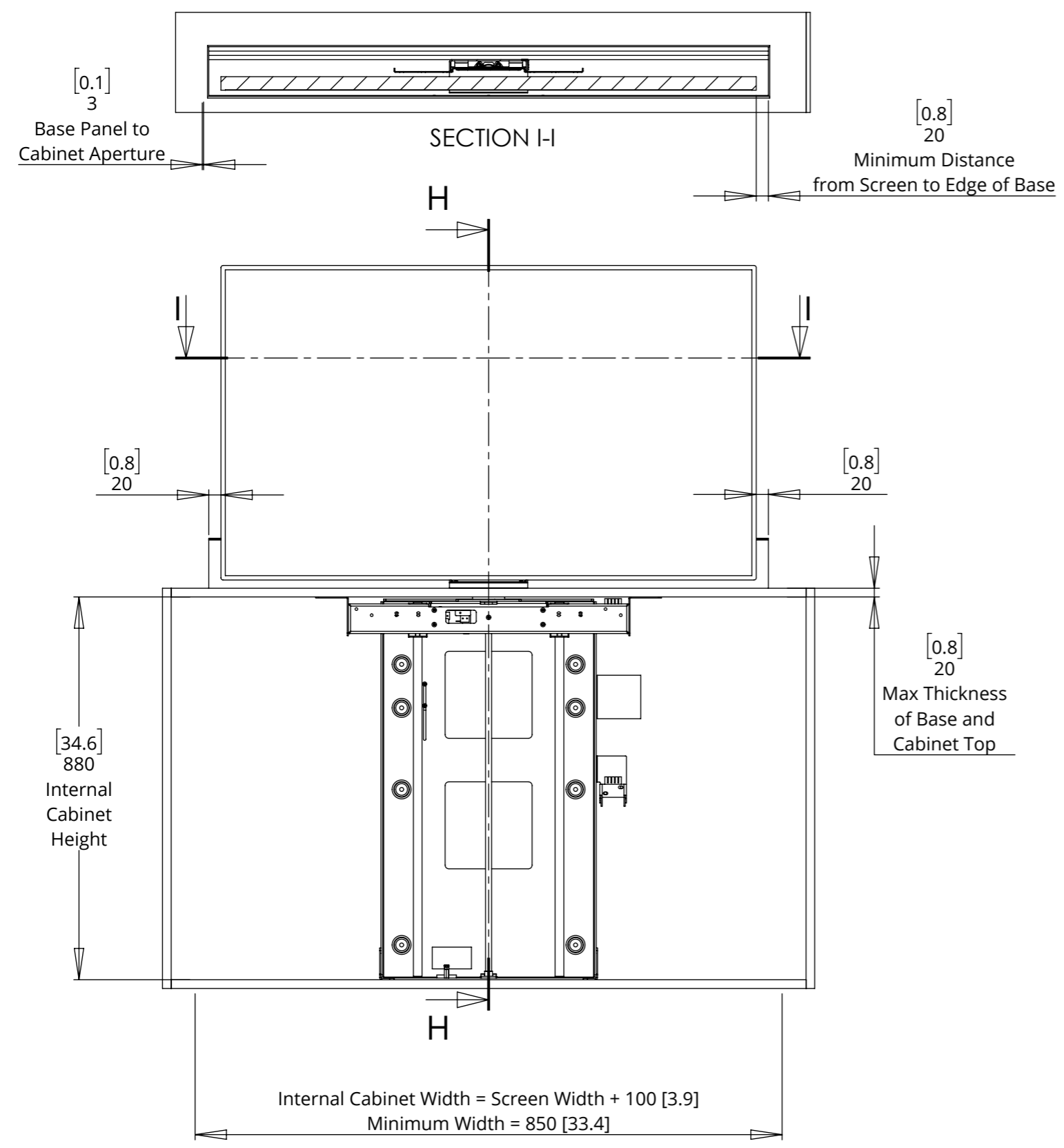
LSM-BE/PF 5

LIFT SYSTEM FOR BOX ENCLOSURE/PUSH FLAP



future automation

LSM-PF 5 - MECHANISM UP - IN CABINET

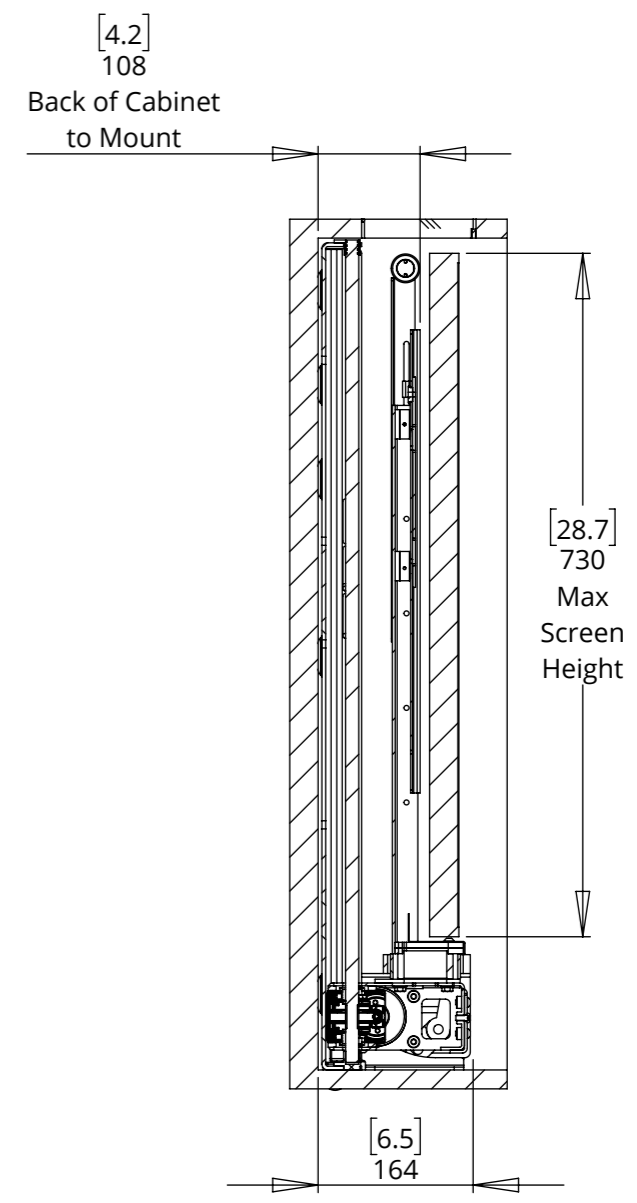
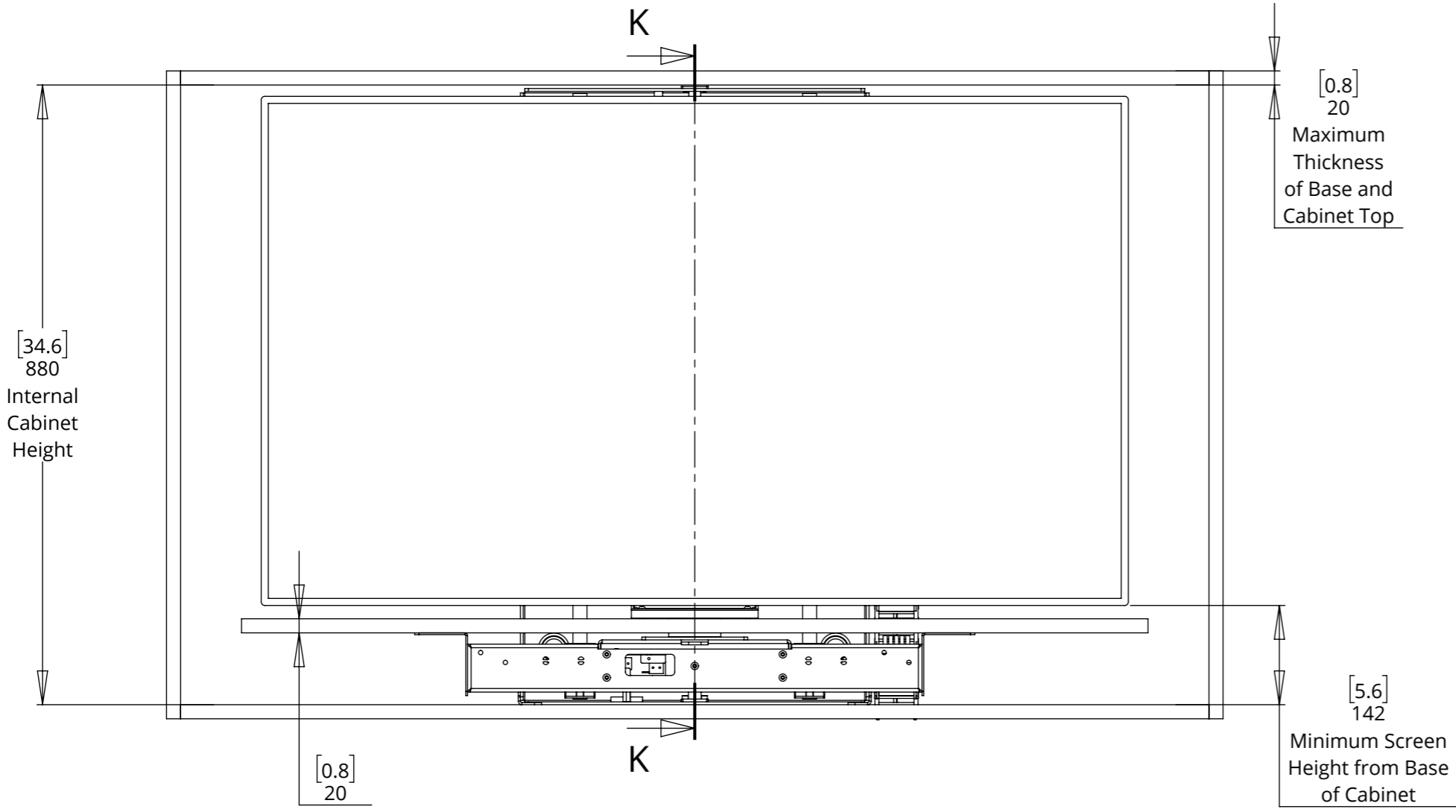
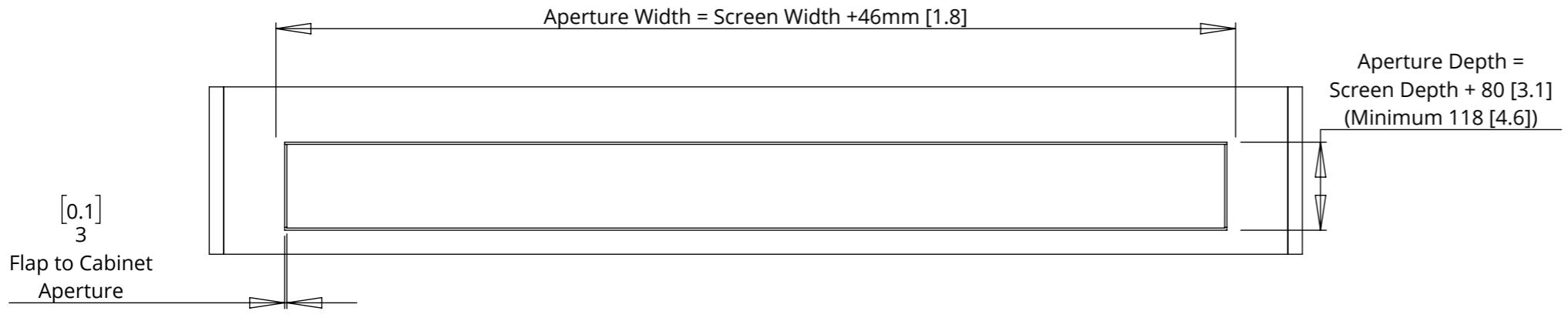


LSM-BE/PF 5

LIFT SYSTEM FOR BOX ENCLOSURE/PUSH FLAP



LSM-PF 5 - MECHANISM DOWN - IN CABINET



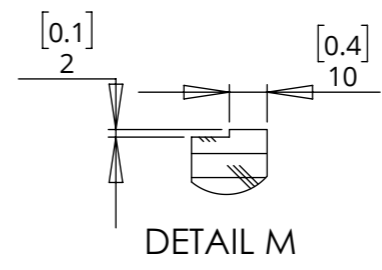
SECTION K-K
TECHNICAL SHEET
ISSUE 001
SHEET 8

LSM-BE/PF 5

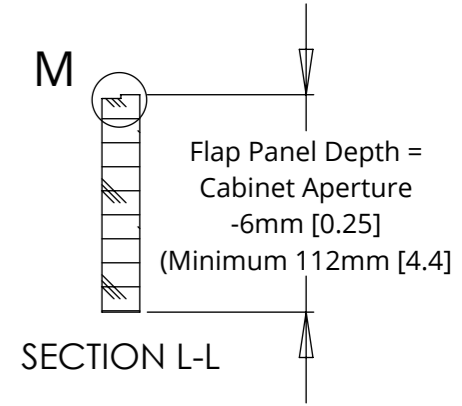
LIFT SYSTEM FOR BOX ENCLOSURE/PUSH FLAP

PUSH FLAP BASE PANEL AND LID DETAILS

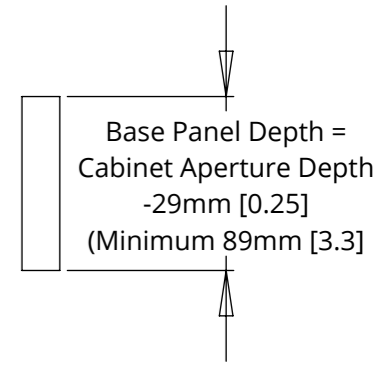
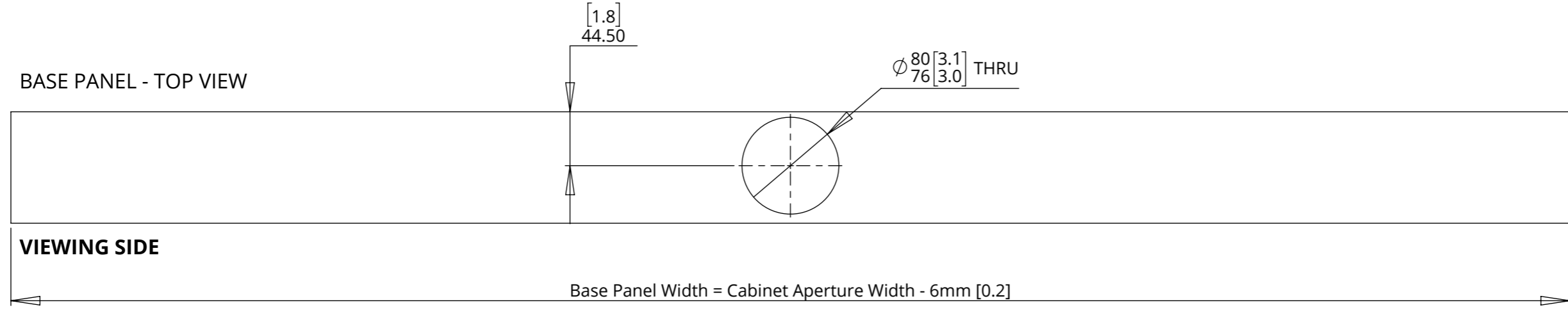
A step is required on the front of the flap to meet a step in the front edge of the cabinet aperture



LID - BOTTOM VIEW



BASE PANEL - TOP VIEW



LSM-BE/PF 5

LIFT SYSTEM FOR BOX ENCLOSURE/PUSH FLAP

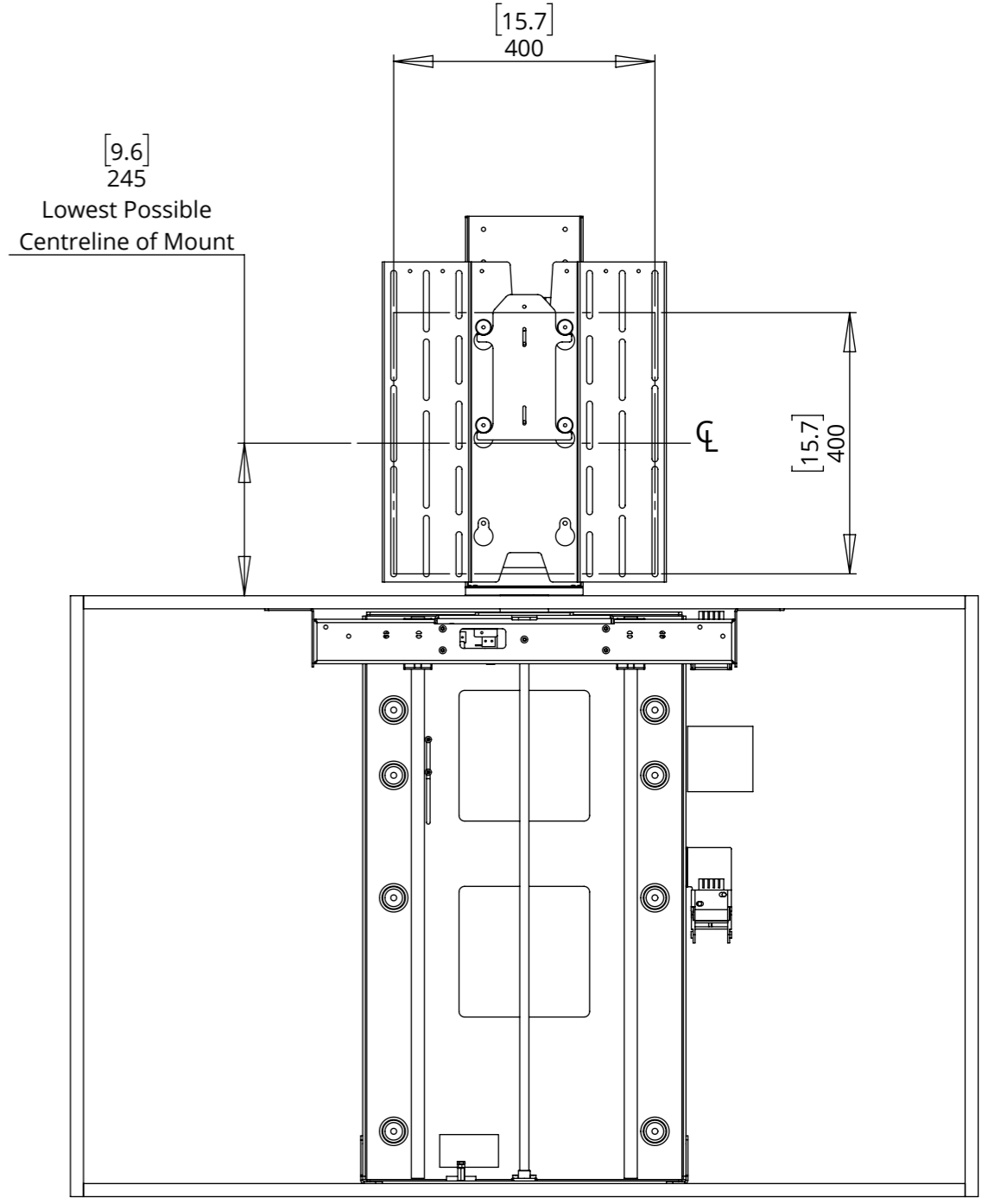
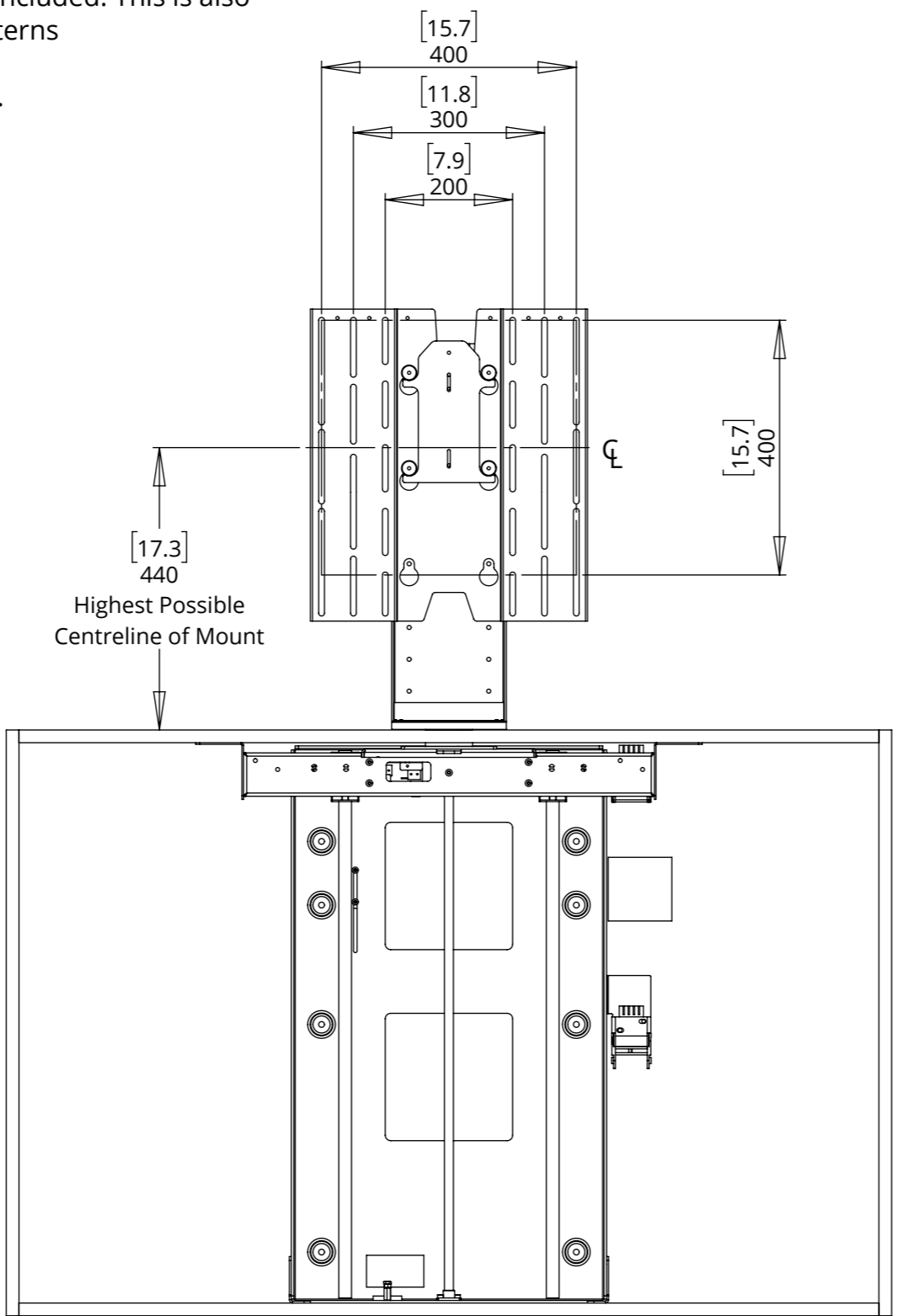
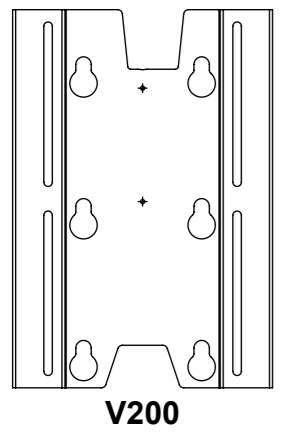
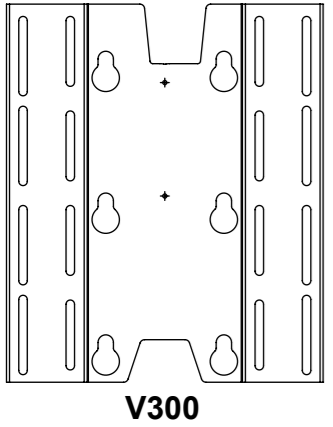
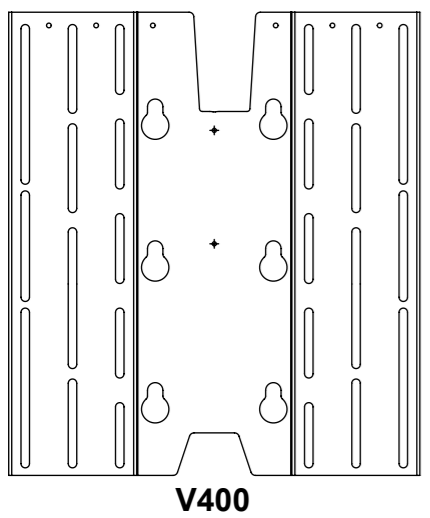


future automation

SCREEN MOUNT ADJUSTABILITY

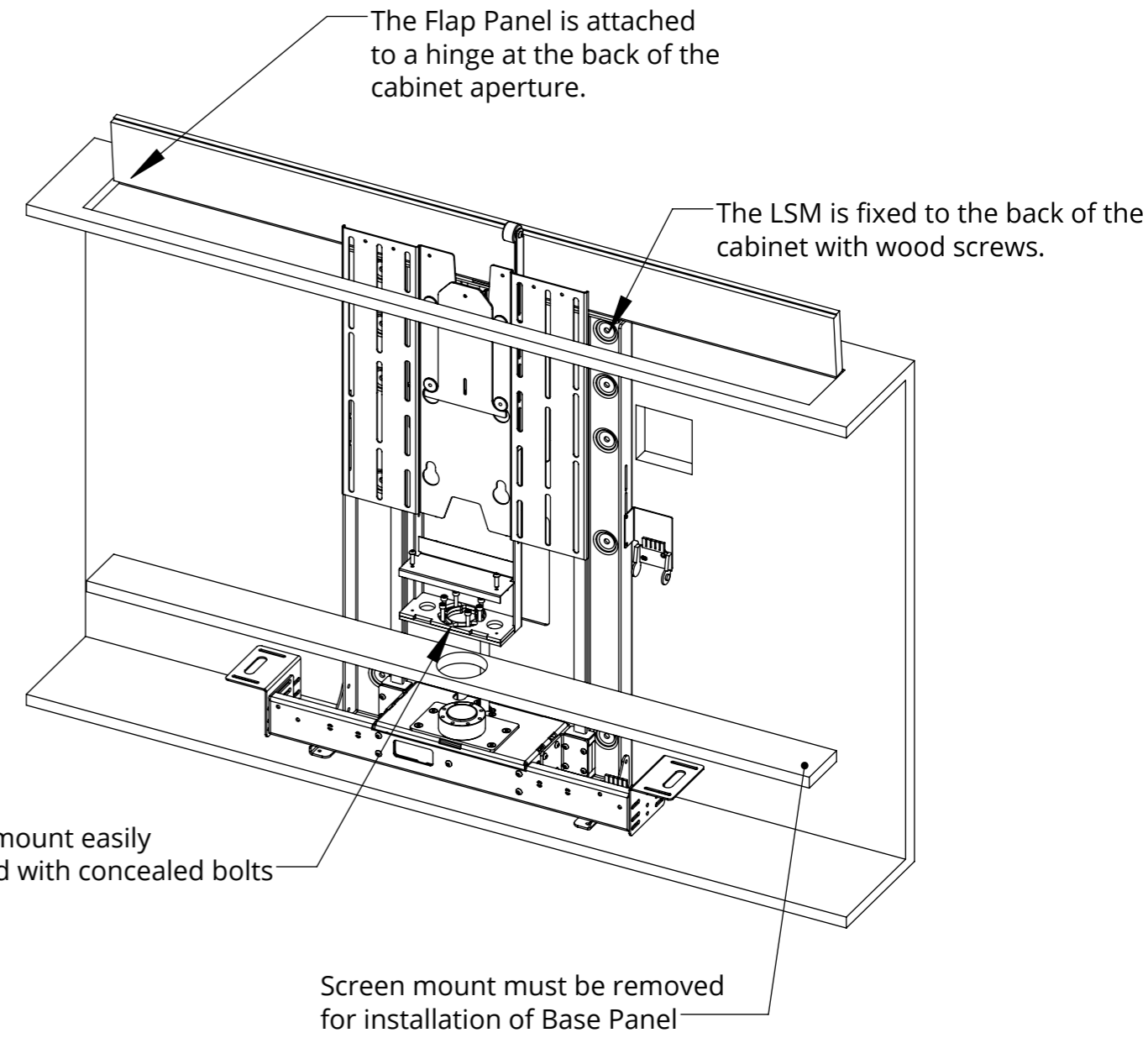
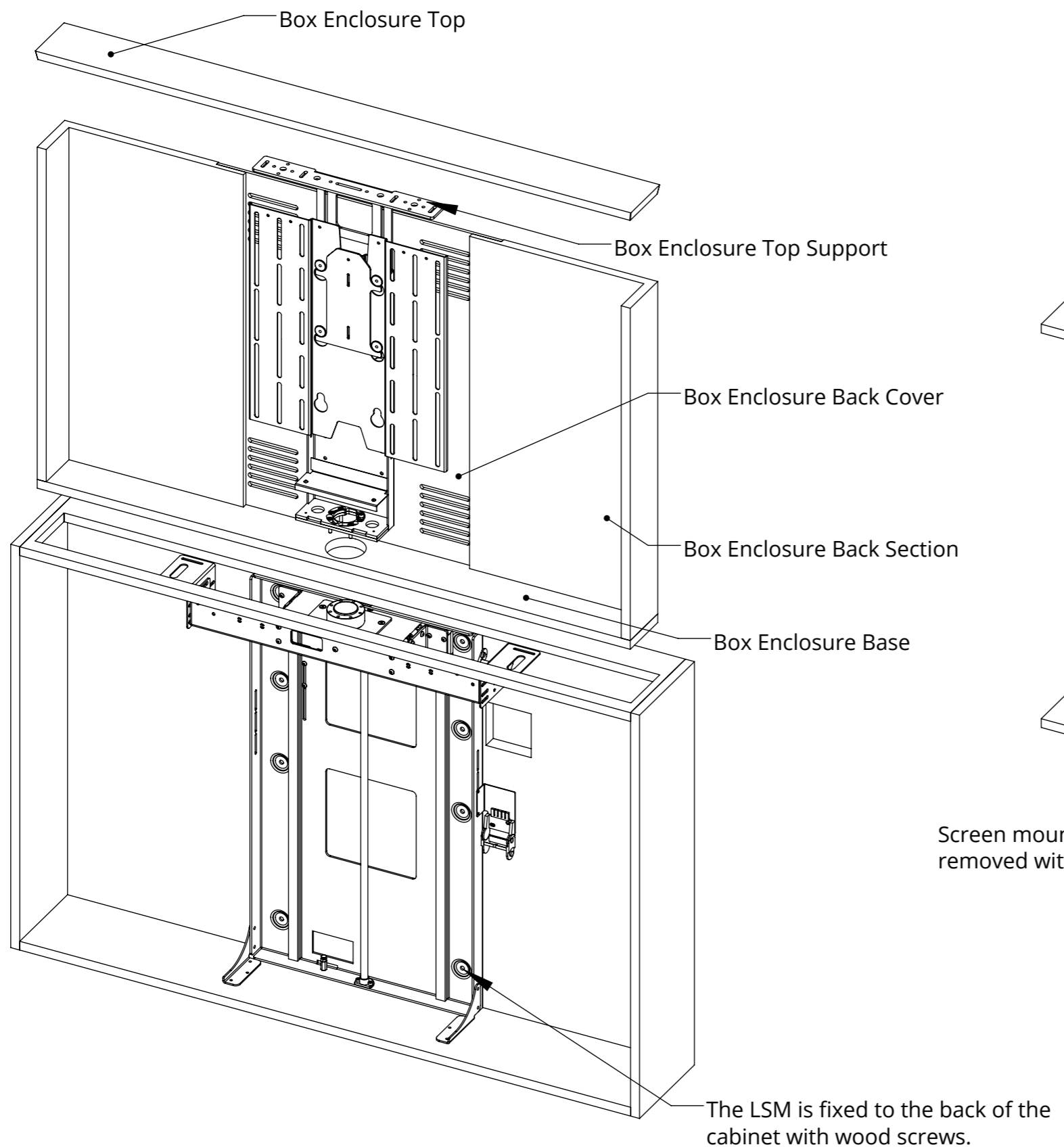
A standard adjustable height VESA 400 mount is included. This is also compatible with VESA 300 and 200 mounting patterns

Separate VESA 300 and 200 mounts are available.



LSM-BE/PF 5 LIFT SYSTEM FOR BOX ENCLOSURE/PUSH FLAP

MECHANISM INSTALLATION OVERVIEW

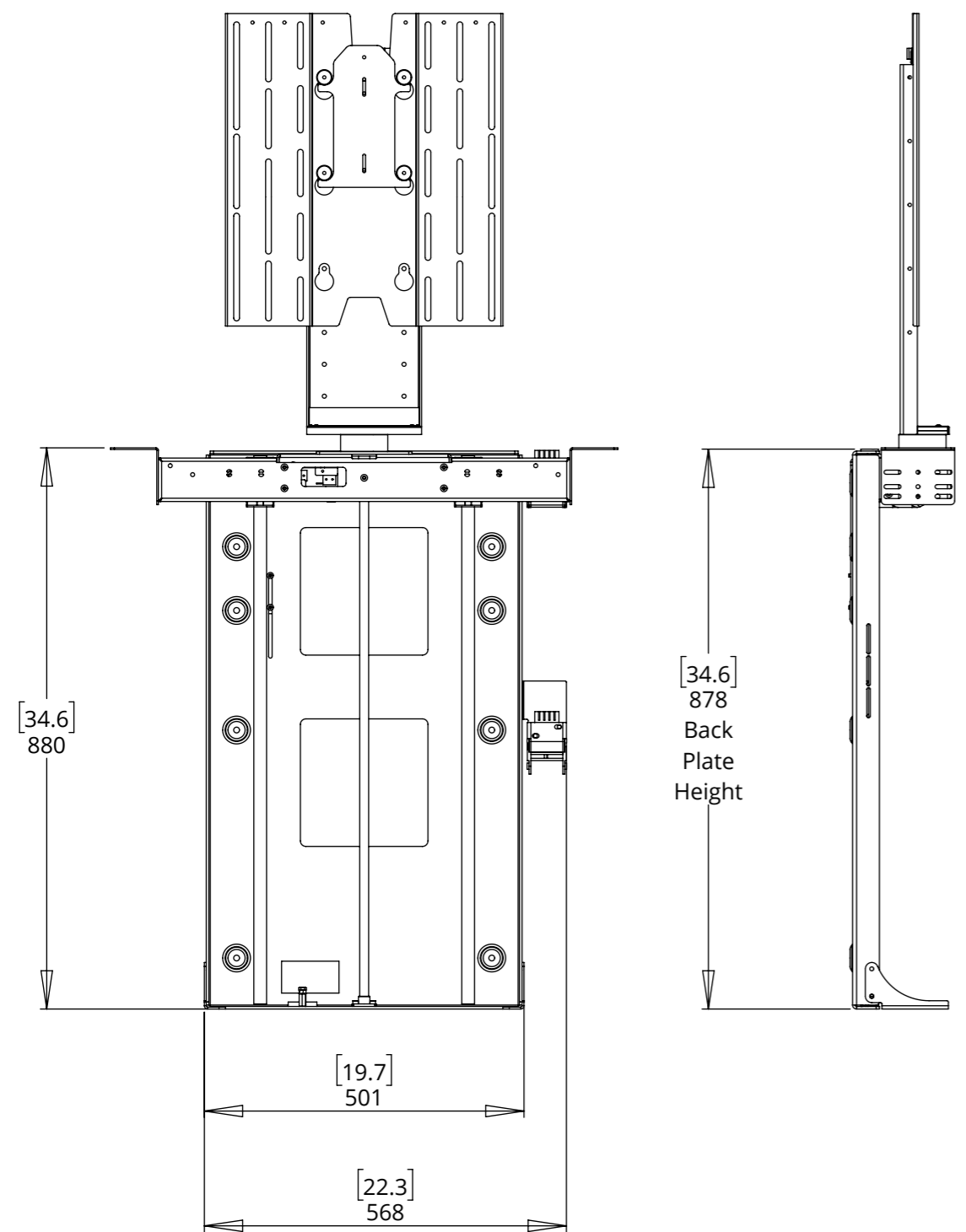


LSM-BE/PF 5

LIFT SYSTEM FOR BOX ENCLOSURE/PUSH FLAP

OVERALL MECHANISM DIMENSIONS

MECHANISM - UP POSITION



MECHANISM - DOWN POSITION

